

WELDING GLOVES

HIGH QUALITY, COMFORTABLE HAND PROTECTION



LINCOLN[®]
ELECTRIC

WELDING GLOVES

Designed by The Welding Experts

STICK



7 Series Stick/
MIG Welding Gloves
K4787-M / -L / -XL



Traditional Stick /
MIG Welding Gloves
K2979-ALL



8 Series Stick/
MIG Welding Gloves
K4788-M / -L / -XL



Heavy Duty Stick /
MIG Welding Gloves
K4082-M / -L / -XL

TIG



MX Series TIG Welding Gloves
K5131-M / -L / -XL



Leather TIG Welding Gloves
K2981-M / -L / -XL



Premium TIG Welding Gloves
K2983-M / -L / -XL

MIG



MX Series MIG
Welding Gloves
K5132-M / -L / -XL



DynaMIG® Traditional
MIG Welding Gloves
K3805-M / -L / -XL / -2XL



DynaMIG HD
MIG Welding Gloves
K3806-M / -L / -XL / -2XL



Premium Leather MIG /
Stick Welding Gloves
K2980-M / -L / -XL

GENERAL PURPOSE



Traditional Drivers Gloves
K3669-M / -L / -XL / 2XL



Welders Drivers Gloves
K3770-M / -L / -XL / -2XL



Cut Resistant A2 Drivers Gloves
K3671-M / -L / -XL / 2XL



Premium Leather
SteelWorker™ Gloves
K2977-S / -M / -L / -XL / -2XL

SPECIAL PURPOSE



ROLL CAGE® Rigging / Welding Gloves
K3109-S / -M / -L / -XL / -2XL



Heat-Resistant Welding Gloves
K2982-L / -XL

WOMEN'S



Women's Stick / MIG Welding Gloves
K3232-S / -M



Women's SteelWorker Gloves
K3231-XS / -S / -M

Selecting Welding Gloves

It's as easy as . . .

1 Primary Welding Process(es)



STICK



TIG



MIG



FLUX-CORED



GENERAL
PURPOSE

2 Amperage Range



3 Rank Your Benefits



Heat
Resistance



Comfort



Dexterity



Durability



Price



WELDING GLOVE SELECTION EXAMPLES

Hank, a welder from Kentucky, primarily stick welds at 150 - 200 amps and values heat resistance and durability.

Product Recommendation:

Heavy Duty Stick/MIG Welding Gloves [K4082-Size]

Paul, a welder from Wisconsin, primarily MIG welds at 250 amps and values dexterity, comfort and price.

Product Recommendation:

DynaMIG MIG Welding Gloves [K3805-Size]

Usage
Recommendations:

Primary Welding Processes:
Stick, Flux-Cored, Pulsed MIG

Secondary Welding Processes:
MIG

Amperage Range:
50A – 450A

TOP FEATURES



Grain Elkskin Construction

The premium top grain elkskin is naturally soft and flexible for great dexterity. This flexibility is coupled with excellent heat resistance as the elkskin resists cracking and stiffening while insulating the hand from heat.



Reinforced Design

Each seam is reinforced with a leather welt and sewn with Kevlar® thread to help prevent rips or tears and increase service life of the glove.



Foam Lined Top Hand with Unlined Palm

Unique internal design features an insulated top hand for enhanced heat resistance while the palm is unlined for improved dexterity and feel.

Premium 7 Series Stick / MIG Welding Gloves



Usage
Recommendations:

Primary Welding Processes:
Stick, Flux-Cored, Pulsed MIG

Secondary Welding Processes:
MIG, Hand Held Subarc

Amperage Range:
50A – 600A

TOP FEATURES



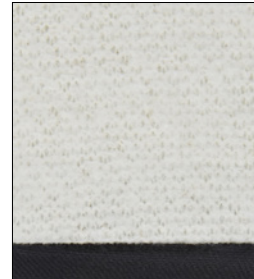
Grain Elkskin Construction

The premium top grain elkskin is naturally soft and flexible for great dexterity. This flexibility is coupled with excellent heat resistance as the elkskin resists cracking and stiffening while insulating the hand from heat.



Padded & Leather Reinforced Palm

Leather palm reinforcements improve durability while the cushioned palm improves grip and reduces hand fatigue for all day comfort



Supreme Heat Resistance

Designed for high amperage applications, the inside of glove features an insulated top hand, padded palm and full cotton liner for excellent heat resistance and comfort

Premium 8 Series Stick / MIG Welding Gloves



Traditional Stick / MIG Welding Gloves



TOP FEATURES



All Leather Construction

Designed for various applications, the complete leather outside construction protects the hands and wrist from spatter, flames and sparks while also providing heat resistance.



Reinforced Seams

Each seam of the glove is reinforced with a piece of leather, called a welt, to prevent tears and increase durability.



Comfortable & Heat Resistant Liners

The cotton hand liner provides heat resistance and comfort while the cotton twill inside cuff liner absorbs moisture.



Heavy Duty Stick / MIG Welding Gloves



TOP FEATURES



Heavy Duty Leather Construction

Designed with meticulous leather specifications, this glove is built to provide excellent heat resistance, durability and safety.



Three Layers of Protection

The three layer FlameSoft™ design combines premium leather, flame retardant foam and soft flame retardant cotton. This supremely comfortable design offers excellent heat resistance and unique safety features.



Exceptional Durability

Stitched with 5 ply Kevlar® and reinforced with leather at high wear points and within each seam to increase durability.



Usage
Recommendations:

Primary Welding Processes:
Stick, Flux-Cored

Secondary Welding Processes:
MIG, Pulsed MIG

Amperage Range:
50A - 325A

Usage
Recommendations:

Primary Welding Processes:
Stick, Flux-Cored

Secondary Welding Processes:
MIG, Pulsed MIG

Amperage Range:
50A - 500A

Usage
Recommendations:

Primary Welding Processes:
TIG, Pulsed TIG

Secondary Welding Processes:
Low Amperage MIG

Amperage Range:
1A - 225A

TOP FEATURES



Grain Leather Construction

The form fitting grain goat skin leather provides optimal fit and feel for TIG welding. The split leather cuff provides abrasion for improved durability.



Superior Dexterity

The lightweight leather and unique seam patterns provide high hand flexibility for improved dexterity.



Reinforced Seams

The Kevlar stitched seams provide high tensile strength and the leather reinforced thumb seam fortifies a high wear point.

Leather TIG Welding Gloves



Usage
Recommendations:

Primary Welding Processes:
TIG, Pulsed TIG

Secondary Welding Processes:
MIG

Amperage Range:
1A - 300A

TOP FEATURES



Keystone Thumb

The ergonomic keystone thumb design provides optimal fit and enhances flexibility.



Padded Palm

The cushioned palm improves grip and reduces hand fatigue for all day comfort.



Heat Resistance

Top hand cotton liner improves heat resistance without sacrificing dexterity.

Premium TIG Welding Gloves



MX Series TIG Welding Gloves



TOP FEATURES



High-Quality Materials
Durahide® cow-skin leather offers high breathe-ability, extreme dexterity, and improved grip



Maximized Mobility
The ergonomic keystone thumb design improves fit and enhances flexibility.



Liner
Top of wrist elastic band improves fit and helps prevent unwanted glove movement.



Usage Recommendations:

Primary Welding Processes:
TIG, Pulsed TIG

Secondary Welding Processes:
MIG

Amperage Range:
1A - 250A

Usage
Recommendations:

Primary Welding Processes:
MIG, Pulsed MIG

Secondary Welding Processes:
Stick, Flux-Cored

Amperage Range:
50-350A

TOP FEATURES



Cut resistant

100% internally lined with knit Kevlar® to provide ANSI A2 cut performance for material handling and welding.



Heat Resistant

Durahide® cowhide leather provides exceptional heat and flame resistance



Liner

Top of wrist elastic band improves fit and helps prevent unwanted glove movement.

MX Series MIG Welding Gloves



Usage
Recommendations:

Primary Welding Processes:
MIG, Flux-Cored

Secondary Welding Processes:
Stick, TIG

Amperage Range:
1A - 300A

TOP FEATURES



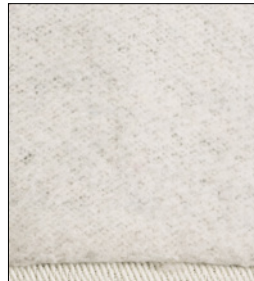
Grain & Split Leather

The split leather top hand resists heat and abrasion while the grain leather palm improves dexterity & comfort.



Elastic Fit

Integrated elastic band near the glove cuff creates a form fit for optimal comfort.



Heat Resistant Liner

The full hand soft cotton liner improves heat resistance and comfort.

DynaMIG Traditional MIG Welding Gloves



Premium MIG Welding Gloves



TOP FEATURES



Grain & Split Leather

The multi-leather design balances comfort, dexterity, heat resistance and durability to provide premium performance.



Padded & Leather Reinforced Palm

Leather palm reinforcements improve durability and heat resistance while the cushioned palm helps grip and provides material handling support.



FlameSoft Liner

The three layer liner combines premium leather, flame retardant foam and soft flame retardant cotton. This comfortable design offers great heat resistance and unique safety features.



Usage
Recommendations:

Primary Welding Processes:
MIG, Flux-Cored

Secondary Welding Processes:
Stick, TIG

Amperage Range:
50A - 400A

DynaMIG HD Heavy Duty MIG Welding Gloves



TOP FEATURES



Grain & Split Leather

The split leather top hand resists heat and abrasion while the grain leather palm improves dexterity & comfort.



Unique Heat Resistant Liner

The inside top hand features a 3 layer cotton & foam liner while the bottom hand features a 2 layer cotton liner.



Moisture Absorbent Cuff

The inside cuff is lined with a moisture absorbent twill cotton for all day comfort.



Usage
Recommendations:

Primary Welding Processes:
MIG, Flux-Cored

Secondary Welding Processes:
Stick, TIG

Amperage Range:
50A - 400A

Usage
Recommendations:

Primary Applications:
Material Handling, Machine
Operation

Secondary Welding Processes:
Tack Welding, Low Amperage
TIG Welding

Amperage Range:
1A – 120A

Note: If glove becomes wet,
discontinue use for welding
applications until dry

TOP FEATURES



10 Inch Length

The glove measures 10 inches
in length to improve clearance
when used for material
handling or with hand tools.



Keystone Thumb

The ergonomic keystone
thumb design improves fit
and enhances flexibility.



Unlined Interior

The unlined interior provides
optimal touch, feel and
dexterity.

Traditional Drivers Gloves



Usage
Recommendations:

Primary Welding Processes:
TIG, Pulsed TIG

Secondary Welding Processes:
Low Amperage MIG

Amperage Range:
1A - 225A

TOP FEATURES



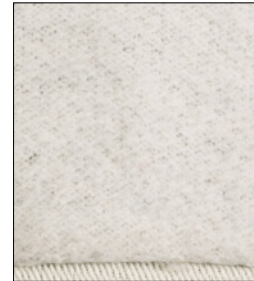
10 Inch Length

The glove measures 10 inches
in length to improve clearance
when used for material
handling or with hand tools.



Keystone Thumb

The ergonomic keystone
thumb design improves fit
and enhances flexibility.



Heat Resistant Liner

The full hand soft cotton
liner improves heat resistance
and comfort.

Welders Drivers Gloves



Cut Resistant Drivers Gloves



TOP FEATURES



Kevlar Cut Resistant Liner

100% internally lined with knit Kevlar® to provide ANSI A2 cut performance for material handling and welding.



Keystone Thumb

The ergonomic keystone thumb design improves fit and enhances flexibility.



Integrated Elastic Wrist

Top of wrist elastic band improves fit and helps prevent unwanted glove movement.



Usage Recommendations:
Primary Welding Processes:
 TIG, Material Handling, Machine Operation
Secondary Welding Processes:
 Low-Medium Amperage MIG
Amperage Range:
 1A – 250A

Full Leather SteelWorker™ Welding Gloves



TOP FEATURES



Grain Leather Construction

The 100% grain leather provides comfort, dexterity and durability for light welding and a variety of material handling applications.



Padded Palm

The cushioned palm provides a comfortable grip and material handling support.



Elastic & Velcro® Wrist

Comfortable snug wrist fit to prevent sparks, dirt and other particles from entering.



Usage Recommendations:
Primary Welding Processes:
 TIG, Pulsed TIG
Secondary Welding Processes:
 MIG
Amperage Range:
 1A - 250A

Roll Cage Welding / Rigging Gloves



TOP FEATURES



Silicone Impact Protection

High temperature silicone reinforcement on the top hand provides improved impact protection that can also withstand moderate ambient heat.



Reinforced Leather Hand

Reinforced grain leather hand for added protection and Kevlar stitched seams to help prevent rips or tears.



Cut Resistant Liner

The internal hand liner is a soft Kevlar knit fabric which can protect against cut hazards while also providing heat resistance.



Usage Recommendations:

Specialized Features:
Impact Protection,
Cut Resistant

Primary Welding Processes:
MIG, Flux-Cored

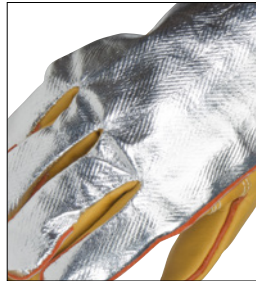
Secondary Welding Processes:
Stick

Amperage Range:
50A - 400A

Heat-Resistant Welding Gloves



TOP FEATURES



95% Radiant Heat Reflection

The top hand is made of an aluminized PFR Rayon® material which reflects 95% of radiant heat to keep your hands cool.



Grain Leather Palm with Padding

The bottom hand is made of grain leather and has an internal padded palm to provide comfort, heat resistance and dexterity.



Multi-Layer Inside Liner

The three layer top hand liner combines PFR Rayon, flame retardant foam and soft flame retardant cotton. This supremely comfortable design offers good heat resistance and unique safety features.



Usage Recommendations:

Specialized Features:
Aluminum PFR Rayon®
top hand

Primary Welding Processes:
MIG

Secondary Welding Processes:
Flux-Cored

Amperage Range:
200A - 450A

Usage
Recommendations:

Primary Welding Processes:
Stick, Flux-Cored

Secondary Welding Processes:
MIG, Pulsed MIG

**Recommended
Amperage Range:**
50A - 325A

TOP FEATURES



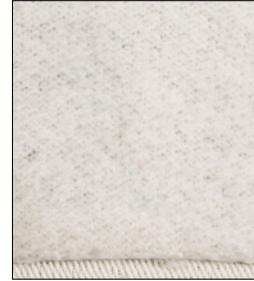
Designed for Women

Specially designed for female hand sizes to provide a comfortable, snug fit that protects from select welding, cutting and handling hazards.



All Leather Construction

Designed for various applications, the complete leather outside construction protects the hands and wrist from spatter, flames and sparks while also providing heat resistance.



Comfortable & Heat Resistant Liners

The cotton hand liner provides heat resistance and comfort while the cotton twill inside cuff liner absorbs moisture.

Women's Traditional Stick / MIG Welding Gloves



Usage
Recommendations:

Primary Welding Processes:
TIG, Pulsed TIG

Secondary Welding Processes:
Low Amperage MIG

**Recommended
Amperage Range:**
1A - 200A

TOP FEATURES



Designed for Women

Specially designed for female hand sizes to provide a comfortable, snug fit that protects from select welding, cutting and handling hazards.



Grain Leather Construction

The high quality grain leather design provides comfort, dexterity and durability for light welding and a variety of material handling applications.



Padded Palm

The cushioned palm improves grip and provides material handling support. The Kevlar stitching adds durability for longer glove life.

Women's Full Leather SteelWorker™ Welding Gloves



Quick Order Guide

PART #	DESCRIPTION	SIZE
STICK		
K4787-M	Premium 7 Series Stick/MIG Welding Gloves	Medium
K4787-L	Premium 7 Series Stick/MIG Welding Gloves	Large
K4787-XL	Premium 7 Series Stick/MIG Welding Gloves	XL
K4788-M	Premium 8 Series Stick/MIG Welding Gloves	Medium
K4788-L	Premium 8 Series Stick/MIG Welding Gloves	Large
K4788-XL	Premium 8 Series Stick/MIG Welding Gloves	XL
K2979-ALL	Traditional MIG / Stick Welding Gloves	All (Large)
K4082-M	Heavy Duty MIG / Stick Welding Gloves	Medium
K4082-L	Heavy Duty MIG / Stick Welding Gloves	Large
K4082-XL	Heavy Duty MIG / Stick Welding Gloves	XL
TIG		
K5132-M	MX Series Premium TIG Welding Gloves	Medium
K5132-L	MX Series Premium TIG Welding Gloves	Large
K5132-XL	MX Series Premium TIG Welding Gloves	XL
K2981-M	Leather TIG Welding Gloves	Medium
K2981-L	Leather TIG Welding Gloves	Large
K2981-XL	Leather TIG Welding Gloves	XL
K2983-M	Premium Leather TIG Welding Gloves	Medium
K2983-L	Premium Leather TIG Welding Gloves	Large
K2983-XL	Premium Leather TIG Welding Gloves	XL
MIG		
K5131-M	MX Series A4 Cut Resistant MIG Gloves	Medium
K5131-L	MX Series A4 Cut Resistant MIG Gloves	Large
K5131-XL	MX Series A4 Cut Resistant MIG Gloves	XL
K3805-M	DynaMIG Traditional MIG Gloves	Medium
K3805-L	DynaMIG Traditional MIG Gloves	Large
K3805-XL	DynaMIG Traditional MIG Gloves	XL
K3805-2XL	DynaMIG Traditional MIG Gloves	2XL
K3806-M	DynaMIG HD MIG Gloves	Medium
K3806-L	DynaMIG HD MIG Gloves	Large
K3806-XL	DynaMIG HD MIG Gloves	XL
K3806-2XL	DynaMIG HD MIG Gloves	2XL
K2980-M	Premium Leather MIG / Stick Welding Gloves	Medium
K2980-L	Premium Leather MIG / Stick Welding Gloves	Large
K2980-XL	Premium Leather MIG / Stick Welding Gloves	XL

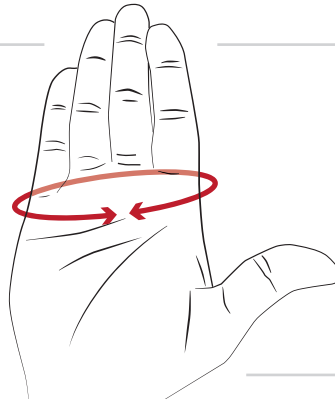
PART #	DESCRIPTION	SIZE
GENERAL PURPOSE		
K3769-M	Traditional Drivers Gloves	Medium
K3769-L	Traditional Drivers Gloves	Large
K3769-XL	Traditional Drivers Gloves	XL
K3769-2XL	Traditional Drivers Gloves	2XL
K3770-M	Welders Drivers Gloves	Medium
K3770-L	Welders Drivers Gloves	Large
K3770-XL	Welders Drivers Gloves	XL
K3770-2XL	Welders Drivers Gloves	2XL
K3771-M	Cut Resistant A2 Drivers Gloves	Medium
K3771-L	Cut Resistant A2 Drivers Gloves	Large
K3771-XL	Cut Resistant A2 Drivers Gloves	XL
K3771-2XL	Cut Resistant A2 Drivers Gloves	2XL
K2977-S	Full Leather SteelWorker Welding Gloves	Small
K2977-M	Full Leather SteelWorker Welding Gloves	Medium
K2977-L	Full Leather SteelWorker Welding Gloves	Large
K2977-XL	Full Leather SteelWorker Welding Gloves	XL
K2977-2XL	Full Leather SteelWorker Welding Gloves	2XL
SPECIAL PURPOSE		
K3109-S	Roll Cage Welding / Rigging Gloves	Small
K3109-M	Roll Cage Welding / Rigging Gloves	Medium
K3109-L	Roll Cage Welding / Rigging Gloves	Large
K3109-XL	Roll Cage Welding / Rigging Gloves	XL
K3109-2XL	Roll Cage Welding / Rigging Gloves	2XL
K2982-L	Heat-Resistant Welding Gloves	Large
K2982-XL	Heat-Resistant Welding Gloves	XL
WOMEN'S		
K3231-XS	Women's SteelWorker Welding Gloves	XS
K3231-S	Women's SteelWorker Welding Gloves	Small
K3231-M	Women's SteelWorker Welding Gloves	Medium
K3232-S	Women's MIG / Stick Welding Gloves	Small
K3232-M	Women's MIG / Stick Welding Gloves	Medium

Welding Gloves Size Chart

Instructions

- To determine glove size, measure the circumference of your hand just below your knuckles.

Refer to the table to the right to determine your size:



Men's Gloves

GLOVE SIZE	HAND CIRCUMFERENCE - IN (CM)
Small	8 (20)
Medium	8.5 (21.5)
Large	9 (23)
XL	9.5 (24.5)
2XL	10 (25.5)

CUSTOMER ASSISTANCE POLICY

The business of The Lincoln Electric Company® is manufacturing and selling high quality welding equipment, consumables, and cutting equipment. Our challenge is to meet the needs of our customers and to exceed their expectations. On occasion, purchasers may ask Lincoln Electric for information or advice about their use of our products. Our employees respond to inquiries to the best of their ability based on information provided to them by the customers and the knowledge they may have concerning the application. Our employees, however, are not in a position to verify the information provided or to evaluate the engineering requirements for the particular weldment. Accordingly, Lincoln Electric does not warrant or guarantee or assume any liability with respect to such information or advice. Moreover, the provision of such information or advice does not create, expand, or alter any warranty on our products. Any express or implied warranty that might arise from the information or advice, including any implied warranty of merchantability or any warranty of fitness for any customers' particular purpose is specifically disclaimed.

Lincoln Electric is a responsive manufacturer, but the selection and use of specific products sold by Lincoln Electric is solely within the control of, and remains the sole responsibility of the customer. Many variables beyond the control of Lincoln Electric affect the results obtained in applying these types of fabrication methods and service requirements.

Subject to Change – This information is accurate to the best of our knowledge at the time of printing. Please refer to www.lincolnelectric.com for any updated information.

*All trademarks and registered trademarks are the property of their respective owners.

Publication E14.745 | Issue Date 05/22
© Lincoln Global, Inc. All Rights Reserved.

The Lincoln Electric Company
22801 St. Clair Avenue • Cleveland, OH • 44117-1199 • U.S.A.
www.lincolnelectric.com