

# Weldcraft™ A-200 Series

## Formerly WP-26 Series

Hand-Held Air-Cooled  
TIG Welding Torches



### Quick Specs

#### Models

A-200  
A-200 Valve  
A-200 Flex  
A-200 Flex Valve

A-200 Flex Redhead™  
A-200 Flex Valve Redhead™

#### Applications

Fabrication  
Maintenance and repair  
Manufacturing  
Shipbuilding  
Vocational

#### Rated Output

DC: 200 A, AC: 150 A

**Duty Cycle** 60%

#### Electrode Range

.020–5/32 in. (0.5–4.0 mm)

### A-200 Series TIG torches

Formerly known as the WP-26 Series, the A-200 Series consists of dependable, top-performing air-cooled torches designed for heavy-duty welding applications.

**Eliminate the expense** of a water-cooled system. The air-cooled capability pairs reliability with cost-effectiveness for all field applications.

**Robust performance.** The heavy copper construction delivers optimal welding capacity for rugged fieldwork.

**Effortless adjustments.** The A-200 Valve provides a gas control valve to ensure a quick, easy adjustment of shielding gas flow.

**Flexibility.** Using the A-200 Flex, the flexible neck easily adjusts to any angle for better torch control in limited-access joints.

**Combining the flexible neck and gas valve** advances capabilities with greater comfort and control (A-200 Flex Valve).

**Maximum versatility.** Utilize the Redhead Series torches in a variety of welding applications without adding expenses.

*Note: Torches delivered may vary slightly from images shown.*



A-200  
(WP-26)



A-200 Valve  
(WP-26V)

### Additional torch models



A-200 Flex  
(WP-26F)

A-200 Flex Valve  
(WP-26FV)



A-200 Flex Redhead  
(WP-R26F)

A-200 Flex Valve Redhead  
(WP-R26FV)



**Miller Electric Mfg. Co.**  
An ITW Welding Company  
1635 West Spencer Street  
P.O. Box 1079  
Appleton, WI 54912-1079 USA

**Equipment Sales US and Canada**  
Phone: 866-931-9730  
FAX: 800-637-2315  
International Phone: 920-735-4554  
International FAX: 920-735-4125

MillerWelds.com



# Torch Packages

| Models    |                           | 1-Piece Power Cable<br>Standard Rubber |                | 2-Piece Power Cable<br>Rubber |                |
|-----------|---------------------------|--|----------------|-------------------------------|----------------|
| Old Model | New Name                  | 12.5 ft. (3.8 m)                       | 25 ft. (7.6 m) | 12.5 ft. (3.8 m)              | 25 ft. (7.6 m) |
| WP-26     | A-200                     | WP-26-12-R                             | WP-26-25-R     | WP-26-12-2                    | WP-26-25-2     |
| WP-26V    | A-200 Valve               | WP-26V-12-R                            | WP-26V-25-R    | WP-26V-12-2                   | WP-26V-25-2    |
| WP-26F    | A-200 Flex                | WP-26F-12-R                            | WP-26F-25-R    | WP-26F-12-2                   | WP-26F-25-2    |
| WP-26FV   | A-200 Flex Valve          | WP-26FV-12-R                           | WP-26FV-25-R   | WP-26FV-12-2                  | WP-26FV-25-2   |
| WP-R26F   | A-200 Flex Redhead™       | WP-R26F-12-R                           | —              | —                             | WP-R26F-25-2   |
| WP-R26FV  | A-200 Flex Valve Redhead™ | —                                      | WP-R26FV-25-R  | —                             | —              |

V = Valve F = Flex FV = Flex Valve

Torch packages include torch body, handle, power cable and long back cap.

## Connectors

### 1-piece power cable connectors



**194723**  
50 mm Dinse-style gas thru  
for one-piece air-cooled torch.



**195379**  
50 mm Dinse-style for  
one-piece air-cooled torch.



**45V62**  
Power cable adapter for  
one-piece air-cooled torch.

### 2-piece power cable connector

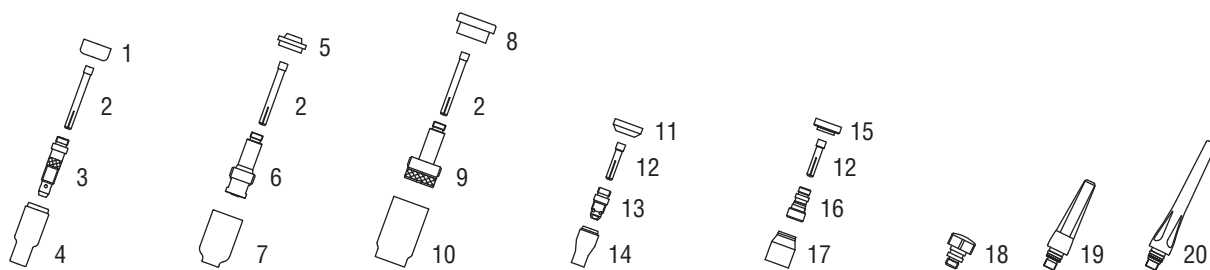


**129527**  
50 mm Dinse-style for two-piece  
cable air-cooled torch.

| Machines   | Connection Type             | 1-Piece Power Cable Connectors | 2-Piece Power Cable Connectors |
|--|-----------------------------|--------------------------------|--------------------------------|
| <b>TIG Machines</b>  |                             |                                |                                |
| Syncrowave® 200/210  | 50 mm Dinse-style gas thru  | <b>194723</b>                  | <b>129527*</b>                 |
| Syncrowave® 250 DX/350 DX (Dinse)  | 50 mm Dinse-style           | <b>195379</b>                  | <b>129527</b>                  |
| Syncrowave® 250 DX/350 DX (stud)   | 1/2 in. stud                | <b>45V62</b>                   | N/A                            |
| Dynasty® 200/210/280/350,<br>Maxstar® 200/210/280/350                    | 50 mm Dinse-style           | <b>195379</b>                  | <b>129527</b>                  |
| <b>Multiprocess Machines</b>   |                             |                                |                                |
| Dimension™ 302/452/NT 450/652  | 1/2 in. stud                | <b>45V62</b>                   | N/A                            |
| PipeWorx   | 1/2 in. stud                | <b>45V62</b>                   | N/A                            |
| XMT® 304/350   | 50 mm Dinse-style           | <b>195379</b>                  | <b>129527</b>                  |
| XMT® 450   | 1/2 in. stud                | <b>45V62</b>                   | N/A                            |
| <b>Engine-Driven Machines</b>  |                             |                                |                                |
| Most Big Blue®, Trailblazer®, Bobcat™,<br>Blue Star® and Wildcat® models | 1/2 in. stud                | <b>45V62</b>                   | N/A                            |
| Big Blue® 450 Duo CST  | 50 mm Dinse-style           | <b>195379</b>                  | <b>129527</b>                  |
| <b>General Reference</b>   |                             |                                |                                |
|  | 50 mm Dinse-style           | <b>195379</b>                  | <b>129527</b>                  |
|  | 50 mm Dinse-style gas thru  | <b>194723</b>                  | N/A                            |
|  | 1/2 in. stud                | <b>45V62</b>                   | N/A                            |
| <b>Other Adapter</b>   |                             |                                |                                |
|  | Stud to dinse-style adapter | <b>232728</b>                  |                                |

\*2-piece power cable connector is not gas thru.

# Consumables (Refer to Owner's Manual for additional replacement parts.)



| Non-Gas Lens                       |                   |                   |                   |                   |                  |                   |                 |              |
|------------------------------------|-------------------|-------------------|-------------------|-------------------|------------------|-------------------|-----------------|--------------|
| <b>Electrode Size — inch (mm)</b>  | <b>.020 (0.5)</b> | <b>.040 (1.0)</b> | <b>1/16 (1.6)</b> | <b>3/32 (2.4)</b> | <b>1/8 (3.2)</b> | <b>5/32 (4.0)</b> |                 |              |
| 1 Insulator (required)             | 18CG              | 18CG              | 18CG              | 18CG              | 18CG             | 18CG              | 18CG            | 18CG         |
| 2 Collet                           | 10N21             | 10N22             | 10N23             | 10N24             | 10N25            | 10N25             | 54N20           | 54N20        |
| 3 Collet Body                      | 10N29             | 10N30             | 10N31             | 10N32             | 10N28            | 10N28             | 406488          | 406488       |
| <b>Nozzle Size — size # (inch)</b> | <b>4 (1/4)</b>    | <b>5 (5/16)</b>   | <b>6 (3/8)</b>    | <b>7 (7/16)</b>   | <b>8 (1/2)</b>   | <b>10 (5/8)</b>   | <b>12 (3/4)</b> | <b>Short</b> |
| 4 Alumina                          | 10N50             | 10N49             | 10N48             | 10N47             | 10N46            | 10N45             | 10N44           | —            |
| * Long Alumina                     | —                 | 10N49L            | 10N48L            | 10N47L            | —                | —                 | —               | —            |
| * Lava                             | 105Z43            | 105Z42            | 105Z44            | 105Z45            | 08N78            | 08N79             | 08N80           | —            |
| * Long Lava                        | 12N03             | 105Z60            | 12N02             | 105Z61            | —                | —                 | —               | —            |
| Gas Lens                           |                   |                   |                   |                   |                  |                   |                 |              |
| <b>Electrode Size — inch (mm)</b>  | <b>.020 (0.5)</b> | <b>.040 (1.0)</b> | <b>1/16 (1.6)</b> | <b>3/32 (2.4)</b> | <b>1/8 (3.2)</b> | <b>5/32 (4.0)</b> |                 |              |
| 5 Insulator (required)             | 54N01             | 54N01             | 54N01             | 54N01             | 54N01            | 54N01             | 54N01           | 54N01        |
| 2 Collet                           | 10N21             | 10N22             | 10N23             | 10N24             | 10N25            | 10N25             | 54N20           | 54N20        |
| 6 Gas Lens                         | 45V29             | 45V24             | 45V25             | 45V26             | 45V27            | 45V27             | 45V28           | 45V28        |
| <b>Nozzle Size — size # (inch)</b> | <b>4 (1/4)</b>    | <b>5 (5/16)</b>   | <b>6 (3/8)</b>    | <b>7 (7/16)</b>   | <b>8 (1/2)</b>   | <b>10 (5/8)</b>   | <b>12 (3/4)</b> | <b>Short</b> |
| 7 Alumina Gas Lens                 | 54N18             | 54N17             | 54N16             | 54N15             | 54N14            | —                 | —               | 54N19        |
| * Long Gas Lens                    | —                 | 54N17L            | 54N16L            | 54N15L            | —                | —                 | —               | —            |
| Large Diameter Gas Lens            |                   |                   |                   |                   |                  |                   |                 |              |
| <b>Electrode Size — inch (mm)</b>  | <b>.020 (0.5)</b> | <b>.040 (1.0)</b> | <b>1/16 (1.6)</b> | <b>3/32 (2.4)</b> | <b>1/8 (3.2)</b> | <b>5/32 (4.0)</b> |                 |              |
| 8 Insulator (required)             | 54N63             | 54N63             | 54N63             | 54N63             | 54N63            | 54N63             | 54N63           | 54N63        |
| 2 Collet                           | 10N21             | 10N22             | 10N23             | 10N24             | 10N25            | 10N25             | 54N20           | 54N20        |
| 9 Large Diameter Gas Lens          | 45V0204           | 45V0204           | 45V116            | 45V64             | 995795           | 995795            | 45V63           | 45V63        |
| <b>Nozzle Size — size # (inch)</b> | <b>4 (1/4)</b>    | <b>5 (5/16)</b>   | <b>6 (3/8)</b>    | <b>7 (7/16)</b>   | <b>8 (1/2)</b>   | <b>10 (5/8)</b>   | <b>12 (3/4)</b> | <b>Short</b> |
| 10 Large Dia. Gas Lens             | —                 | —                 | 57N75             | —                 | 57N74            | 53N88             | 53N87           | 53N89        |
| * Large Dia. Gas Lens-L            | —                 | —                 | 57N75L            | —                 | 57N74L           | 53N88L            | 53N87L          | —            |
| * Large Dia. Gas Lens-XL           | —                 | —                 | 57N75XL           | —                 | 57N74XL          | 53N88XL           | 53N87XL         | —            |
| * Large Dia. Gas Lens-XXL          | —                 | —                 | 57N75XXL          | —                 | 57N74XXL         | 53N88XXL          | 53N87XXL        | —            |
| Stubby Non-Gas Lens                |                   |                   |                   |                   |                  |                   |                 |              |
| <b>Electrode Size — inch (mm)</b>  | <b>.020 (0.5)</b> | <b>.040 (1.0)</b> | <b>1/16 (1.6)</b> | <b>3/32 (2.4)</b> | <b>1/8 (3.2)</b> |                   |                 |              |
| 11 Insulator (required)            | 18CG20            | 18CG20            | 18CG20            | 18CG20            | 18CG20           | 18CG20            | 18CG20          | 18CG20       |
| 12 Stubby Collet                   | —                 | 10N22S            | 10N23S            | 10N24S            | 10N25S           | 10N25S            | 10N25S          | 10N25S       |
| 13 Stubby Collet Body              | 17CB20            | 17CB20            | 17CB20            | 17CB20            | 17CB20           | 17CB20            | 17CB20          | 17CB20       |
| <b>Nozzle Size — size # (inch)</b> | <b>4 (1/4)</b>    | <b>5 (5/16)</b>   | <b>6 (3/8)</b>    | <b>7 (7/16)</b>   | <b>8 (1/2)</b>   | <b>10 (5/8)</b>   | <b>12 (3/4)</b> | <b>Short</b> |
| 14 Stubby Alumina                  | 13N08             | 13N09             | 13N10             | 13N11             | 13N12            | 13N13             | —               | —            |
| Stubby Gas Lens                    |                   |                   |                   |                   |                  |                   |                 |              |
| <b>Electrode Size — inch (mm)</b>  | <b>.020 (0.5)</b> | <b>.040 (1.0)</b> | <b>1/16 (1.6)</b> | <b>3/32 (2.4)</b> | <b>1/8 (3.2)</b> |                   |                 |              |
| 15 Insulator (required)            | 17GLG20           | 17GLG20           | 17GLG20           | 17GLG20           | 17GLG20          | 17GLG20           | 17GLG20         | 17GLG20      |
| 12 Stubby Collet                   | —                 | 10N22S            | 10N23S            | 10N24S            | 10N25S           | 10N25S            | 10N25S          | 10N25S       |
| 16 Stubby Gas Lens                 | —                 | 17GL040           | 17GL116           | 17GL332           | 17GL18           | 17GL18            | 17GL18          | 17GL18       |
| <b>Nozzle Size — size # (inch)</b> | <b>4 (1/4)</b>    | <b>5 (5/16)</b>   | <b>6 (3/8)</b>    | <b>7 (7/16)</b>   | <b>8 (1/2)</b>   | <b>10 (5/8)</b>   | <b>12 (3/4)</b> | <b>Short</b> |
| 17 Alumina Gas Lens                | 53N58             | 53N59             | 53N60             | 53N61             | 53N61S           | —                 | —               | —            |
| Back Caps                          |                   |                   |                   |                   |                  |                   |                 |              |
| 18 Short                           | 57Y04             | 19 Medium         | 300M              | 20 Long           | 57Y02            |                   |                 |              |

\*Not shown.

# Tungsten

## Tungsten for the most demanding TIG welding applications!

Available in four types and industry-standard diameters, our line of Weldcraft™ tungsten electrodes has undergone rigorous testing to ensure the highest quality and durability. Color-coded packages include ten 7-inch (175 mm) tungsten electrodes.

*Note: Refer to manufacturer SDS sheets for proper preparation and safety. Use proper ventilation/capture during preparation. Refer to manufacturer warning regarding ventilation.*



| Type   | Diameter in. (mm) | Part #          | Type  | Diameter in. (mm) | Part #         |
|--|-------------------|-----------------|---|-------------------|----------------|
| <b>2% Ceriated (EWCe-2)</b>  |                   |                 | <b>Pure (EWP)</b>   |                   |                |
| Performs well in DC welding and arc starting at low-current settings, and offers excellent performance in AC processes.                    | 0.040 (1.0)       | <b>WC040X7</b>  | Forms a clean, balled end when heated and provides good arc stability for AC welding with a balanced or unbalanced squarewave or sine wave. | 0.040 (1.0)       | —              |
|  | 1/16 (1.6)        | <b>WC116X7</b>  |   | 1/16 (1.6)        | <b>WP116X7</b> |
|  | 3/32 (2.4)        | <b>WC332X7</b>  |   | 3/32 (2.4)        | <b>WP332X7</b> |
|  | 1/8 (3.2)         | <b>WC018X7</b>  |   | 1/8 (3.2)         | <b>WP018X7</b> |
|  | 5/32 (4.0)        | <b>WC532X7</b>  |   | 5/32 (4.0)        | —              |
| <b>2% Lanthanated (EWLa-2)</b>   |                   |                 | <b>Rare Earth (EWG)</b>   |                   |                |
| Provides excellent arc starting, arc stability and re-ignition, and less tip erosion in AC or DC welding. Can substitute for 2% Thoriated. | 0.040 (1.0)       | <b>WL2040X7</b> | Combines the best of all alloying elements, and provides excellent arc stability in AC or DC welding.                                       | 0.040 (1.0)       | —              |
|  | 1/16 (1.6)        | <b>WL2116X7</b> |   | 1/16 (1.6)        | <b>WG116X7</b> |
|  | 3/32 (2.4)        | <b>WL2332X7</b> |   | 3/32 (2.4)        | <b>WG332X7</b> |
|  | 1/8 (3.2)         | <b>WL2018X7</b> |   | 1/8 (3.2)         | <b>WG018X7</b> |
|  | 5/32 (4.0)        | <b>WL2532X7</b> |   | 5/32 (4.0)        | —              |

## Replacement Parts

|                                |                         |                       |
|--------------------------------|-------------------------|-----------------------|
| <b>Torch Bodies</b>            |                         |                       |
| A-200                          | <b>WP-26</b>            |                       |
| A-200 Valve                    | <b>WP-26V</b>           |                       |
| A-200 Flex                     | <b>WP-26F</b>           |                       |
| A-200 Flex Valve               | <b>WP-26FV</b>          |                       |
| A-200 Redhead™ Flex            | <b>WP-R26F</b>          |                       |
| A-200 Redhead™ Flex Valve      | <b>WP-R26FV</b>         |                       |
| <b>Handles</b>                 |                         |                       |
| A-200 (ribbed)                 | <b>H-200R</b>           |                       |
| A-200 Valve (knurled)          | <b>H-200</b>            |                       |
| A-200 Flex (ribbed)            | <b>10N15R</b>           |                       |
| A-200 Flex Valve (knurled)     | <b>10N15</b>            |                       |
| <b>Valve Knob</b>              |                         |                       |
| All valve models               | <b>VS-1</b>             |                       |
| <b>Flex Head Only</b>          |                         |                       |
| A-200 Flex/Flex Valve          | <b>26F</b>              |                       |
| A-200 Redhead™ Flex/Flex Valve | <b>R26F</b>             |                       |
| <b>Power Cables</b>            |                         |                       |
|                                | <b>12.5 ft. (3.8 m)</b> | <b>25 ft. (7.6 m)</b> |
| 1-Piece Rubber                 | <b>46V28R</b>           | <b>46V30R</b>         |
| 2-Piece Rubber                 | <b>46V28-2</b>          | <b>46V30-2</b>        |

## Genuine Miller® Accessories



**Accessory Kit AK3C**  
Includes one short back cap, one of each size (#5, #6, #8) alumina nozzle, and one of each size (1/16, 3/32, 1/8 inch) of the following: collet, collet body, and 7-inch 2% ceriated tungsten electrode.

**Extension Kit EK325R** 25 ft. (7.6 m), rubber



**Cable Covers**  
**WC-3-10**  
10 ft. (3 m)  
**WC-3-22**  
22 ft. (6.7 m)



**Wireless Remote Foot Control 300429**  
For remote current and contactor control. Receiver plugs directly into the 14-pin receptacle of Miller machine. 90-foot (27.4 m) operating range.



**Wireless Remote Hand Control 300430**  
For remote current and contactor control. Receiver plugs directly into the 14-pin receptacle of Miller machine. 300-foot (91.4 m) operating range.



**RCC-14 Remote Contactor and Current Control 151086**  
East/west rotary-motion fingertip control attaches to TIG torch using two hook-and-loop fasteners. Includes 26.5-foot (8 m) cord with 14-pin plug.



**RCCS-14 Remote Contactor and Current Control 043688**  
North/south rotary-motion fingertip control attaches to TIG torch using two hook-and-loop fasteners. Includes 26.5-foot (8 m) cord with 14-pin plug.

Distributed by:

